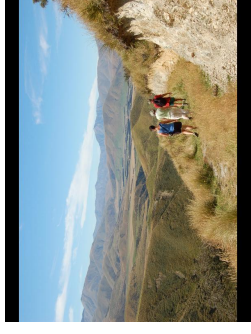
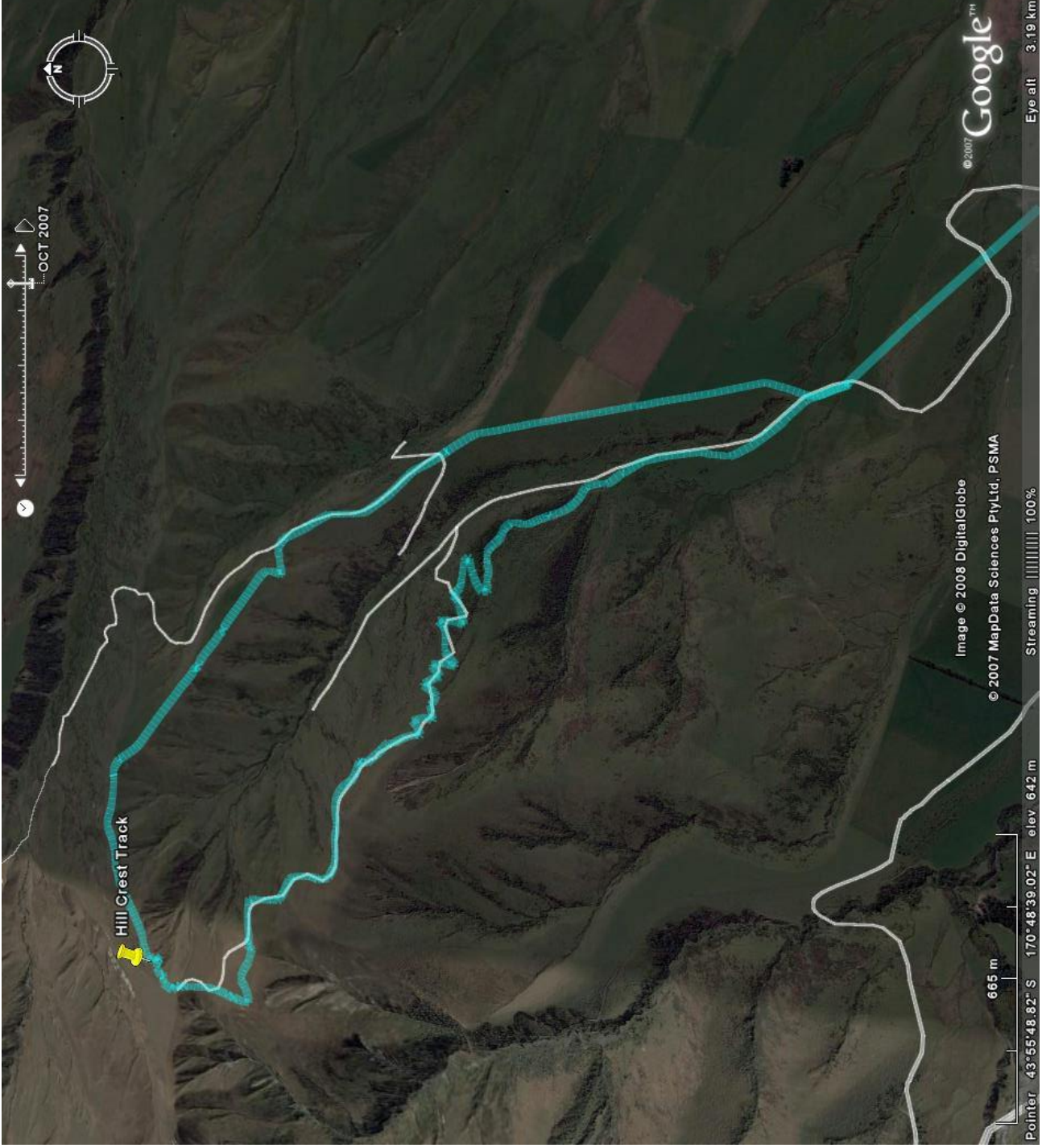


# Hill Crest Track

Discover Something  
Real



Fairlie  
MacKenzie



# Hill Crest Track

---

Hill Crest Track is situated approximately 15 kms from, Fairlie. It is suited to walkers of medium fitness and is through open alpine type country. Mountain Cycles are permitted subject to land owner's permission.

Length: 8kms

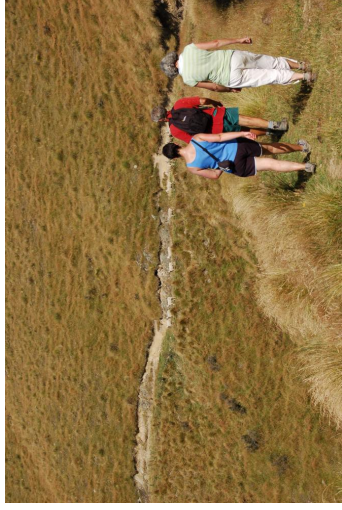
Time: Allow 4 hours

Height: Climbs 400 mtrs from the parking area

Weather. Summer can be very hot 30 + deg. Winter very cold.

Past a QEII Open Space Covenant area

There is a picnic spot near the top with magnificent views over Lake Opuha to the coast.



## Safety

General walking rules apply. Take a warm jacket in case of a weather change.

The walk is relatively easy going over a 4WD track. Sturdy footwear recommended. Take a large bottle of drinking water.

## Rules

This track is over private land on a working farm. Please do not disturb stock..

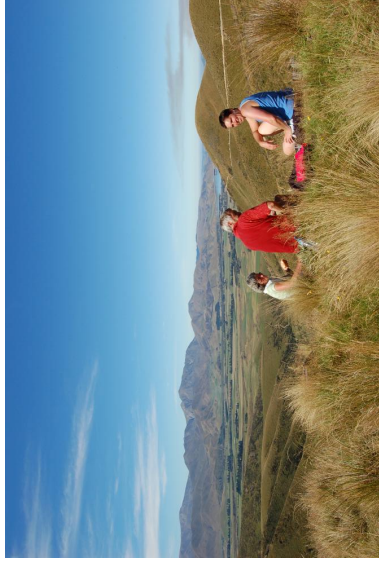
No Dogs

No Motor Bikes

Close any gates that you open

Track is closed during October for Lambing.

Do NOT take matches or create any flame, this is a high fire risk area. No smoking.



Ring the Owners for Permission and directions before arriving. Steve & Jennifer Crone are very generous in making their property available and the Fairlie District Promotions Assoc thanks them for their support.

Phone: Steve or Jennifer Crone 03 685 4800 or 021 035 4746 to arrange access.

---

Hill Crest Track

Fairlie District Promotions Assn